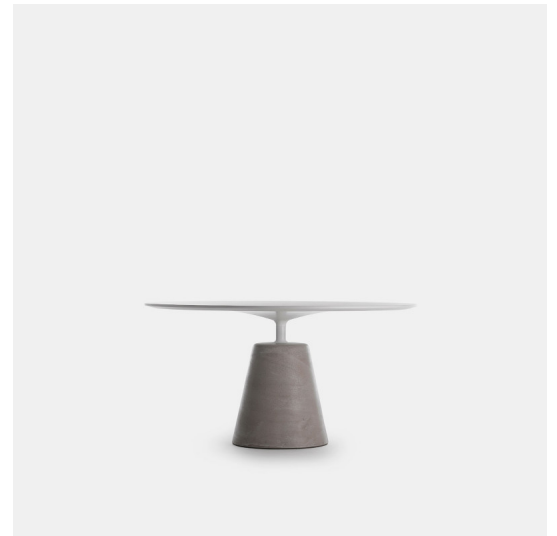


# mdf italia



© COPYRIGHT 2024 MDF ITALIA SRL SOCIETA' UNIPERSONALE

2014-2022

## ROCK TABLE

Designed by Jean Marie Massaud

The iconic table, with its fluid and elegant silhouette, completely reveals the nature of what it represents: “a round table” that seems to float above a solid, inorganic base. A mixture of natural and industrial materials that are blended to create a new product with a smooth design, following the same philosophy of Flow collection.

A refined solid object, light and stable, radical as well as sensual. Rock Table unique style, based on simplified shapes, is combined with innovative production systems and this makes MDF Italia tables suitable not only to modern living rooms, but also to lounge designs and working contexts, such as offices, meeting rooms, conference rooms with a strong identity.

To respond to market demands and meet the ever-increasing need for open spaces, the classic round versions of the Rock Table have been joined by a new oval version, characterised by two concrete bases supporting the table top. A spacious table designed for conviviality: the 2.5-metre and 3-metre lengths can accommodate up to 12 people.

[DISCOVER THE OUTDOOR VERSION](#)

### DIMENSIONS AND FINISHES

- . tabletop in size 80/100 cm: matt lacquered, cement and stone chip cement;
- . tabletop in size 120/140 cm: matt lacquered, cement, stone chip cement and glass;
- . tabletop in size 250/300 cm: cement and stone chip cement.

### BASES

- . narrow (with outer dimension of 34 cm at floor level) with 80 and 100 cm large tabletops;
- . wide (with outer dimension of 50 cm at floor level) with 120 and 140 cm large tabletops;
- . double (with outer dimension of 50 cm at floor level) with oval tops of 250 and 300 cm large.

## TABLETOP

### LAQUERED

Medium density wood fibre panel, 25 mm thick, machined on the edge, and painted matt white or matt graphite grey. Tops: 80, 100, 120, 140 cm.

### CEMENT

In white or anthracite UHPFRC cement (ultra high performance, fibre reinforced cement), with high technical / structural characteristics. Tops: 80, 100, 120, 140, 250 e 300 cm.

### STONE CHIP CEMENT

In UHPFRC (ultra high performance, fibre reinforced cement), with high technical / structural characteristics, coloured in mass using natural oxides, enhanced with a stone chip surface made up of Alpine rocks and stones (white and green stone chip top), or stone chip made up of stones from Tuscany (terracotta top). Tops: 80, 100, 120, 140, 250 e 300 cm.

### GLASS

Smoked tempered glass, 12 mm thick (tops: 120, 140 cm).

## MONOCHROME COMBINATIONS

### WHITE VERSION

Base in natural cement, matt white tube and flange, lacquered white, white or white stone chip cement top.

### ANTHRACITE VERSION

Base in anthracite cement, matt anthracite tube and flange, lacquered anthracite grey, anthracite cement, or smoked glass top.

### ORANGE VERSION

Base in terracotta cement, matt orange tube and flange, terracotta stone chip cement top.

### GREEN VERSION

Base in green cement, matt green tube and flange, green stone chip cement top.

## OUTDOOR USE

The table with cement top and stone chip cement top are also suitable for outdoor.

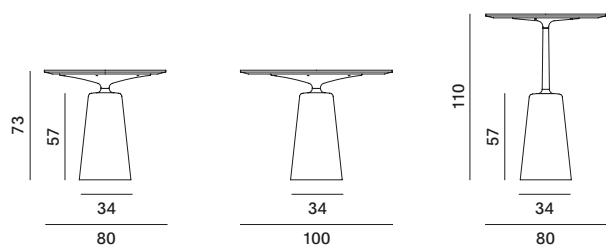
### OUTDOOR COVERING TARPAULIN

Protective tarpaulin specifically for outdoor products, waterproof, made of 100% polyester, outside with acrylic coating, inside with acrylic resin coating. Its characteristics are emphasised by its fully fungicidal Teflon finish. Each tarpaulin comes with a closable slip cover, so that it can be folded and kept correctly when not in use.

# Rock Table

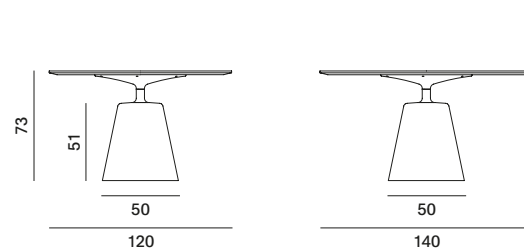


## Round tables with narrow base

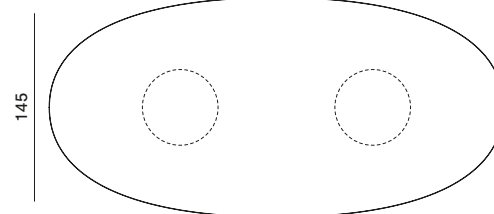
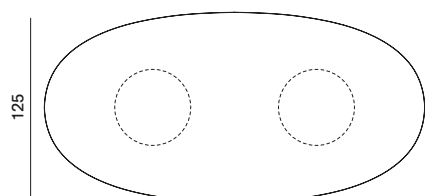
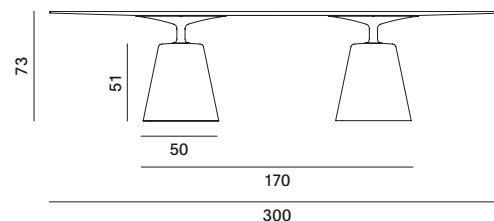
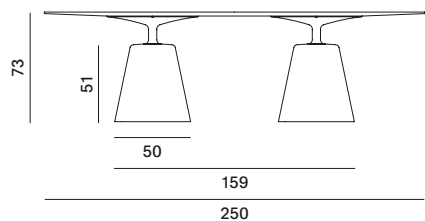


## Round tables with wide base

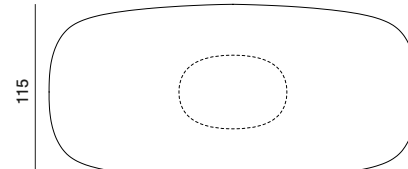
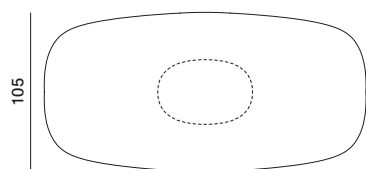
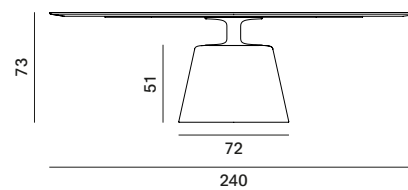
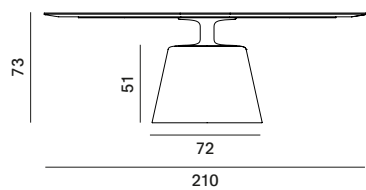
Tables with glass top are H71.5



## Oval tables with double base



## Maxi table



# Finishing

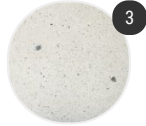
The number in the dot corresponds to the number of colour/material finish.

Here below, in the section FINISH OPTIONS, please note all the colours of the materials used for this product.

## TABLE

---

### Top



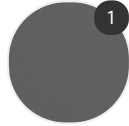
Stone chip cement



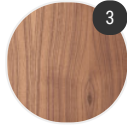
Cement



Matt lacquered



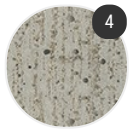
Glass



Wood

---

### Structure



Cement

# Finish options

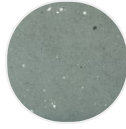
## TOP

---

### Stone chip cement



White stone  
chip cement



Green stone  
chip cement

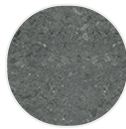


Terracotta  
stone chip  
cement

### Cement



White cement



Anthracite  
cement

### Matt lacquered



Matt  
lacquered  
white X042



Matt  
lacquered  
graphite grey  
X082

### Glass



Smoked grey  
tempered  
glass

### Wood



Canaletto  
walnut



Bleached oak  
X075



Brown oak  
X076

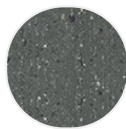
# STRUCTURE

---

## Cement



Cement  
natural X080



Cement  
anthracite  
X081



Cement green



Cement  
terracotta